

# MHA Program Update

Jean Abraham, PhD & Mary Ellen Wells, MHA  
MHA Program Dyad Partners

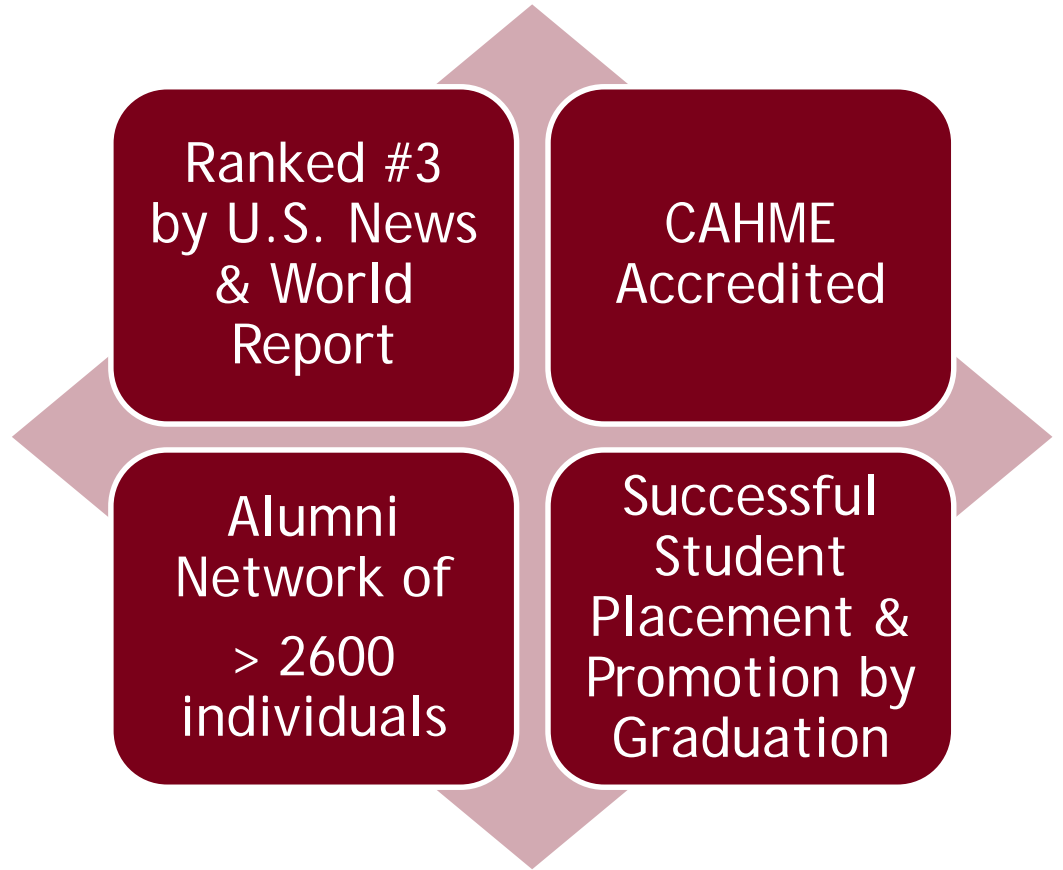
[#MHASymposium](#)

# The MHA Program mission is to enhance health and strengthen societies by:

- Developing professionals who lead innovative, high performance healthcare organizations
- Improving the health of their communities and advancing the field of healthcare administration
- Researching and disseminating new knowledge for the field of healthcare administration



# What distinguishes the Minnesota MHA Program?



# The MHA Degree: Full-Time Program

## Cohort Model

- 40 students per year

## On-Campus

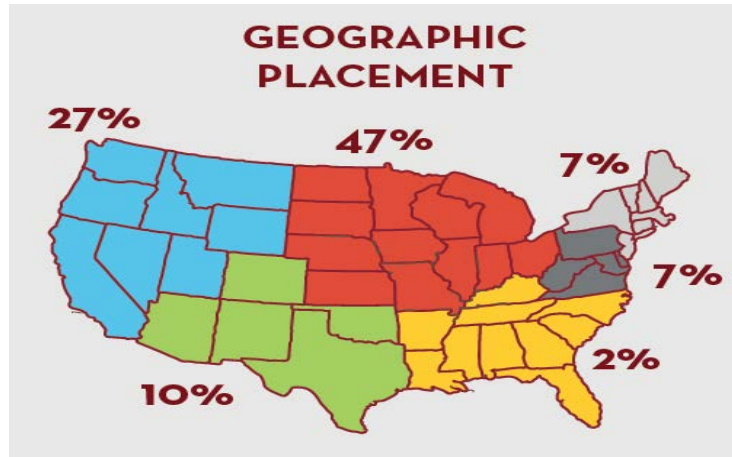
- 4 semesters, 60 credits
- Summer residency/clerkship experience

## Designed for recent BA/BS graduates

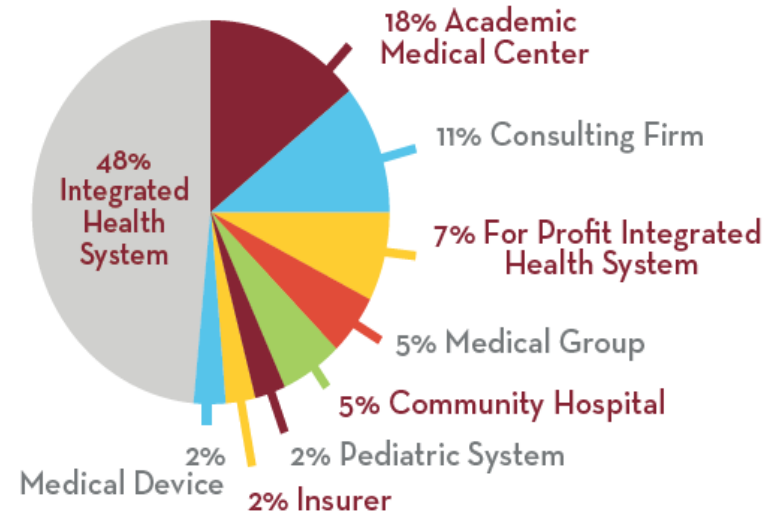
- 1-5 years of work experience
- Diverse academic backgrounds

# Where do our full-time program graduates go?

- 85% to administrative fellowships
- 15% into full-time positions



## EMPLOYMENT BY INDUSTRY



# The MHA Degree: Executive Program

## Cohort Model

- 25-35 students per year

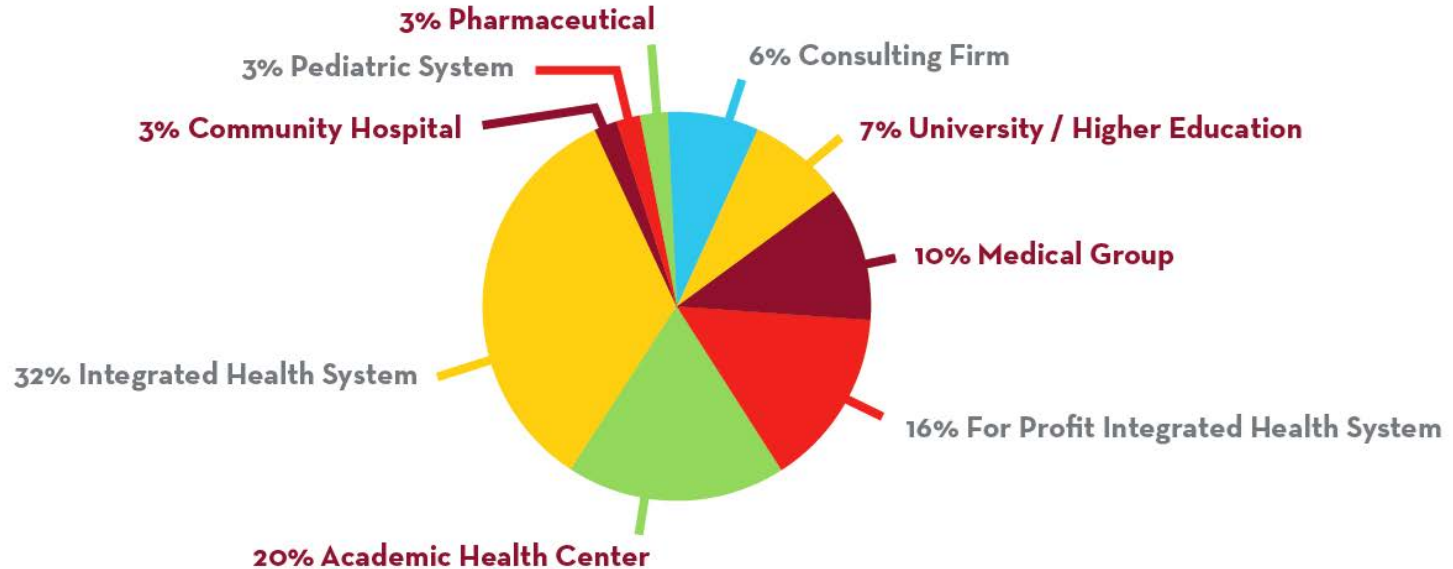
Designed for employed executives, physicians, and other professionals seeking to advance their management and leadership skills.

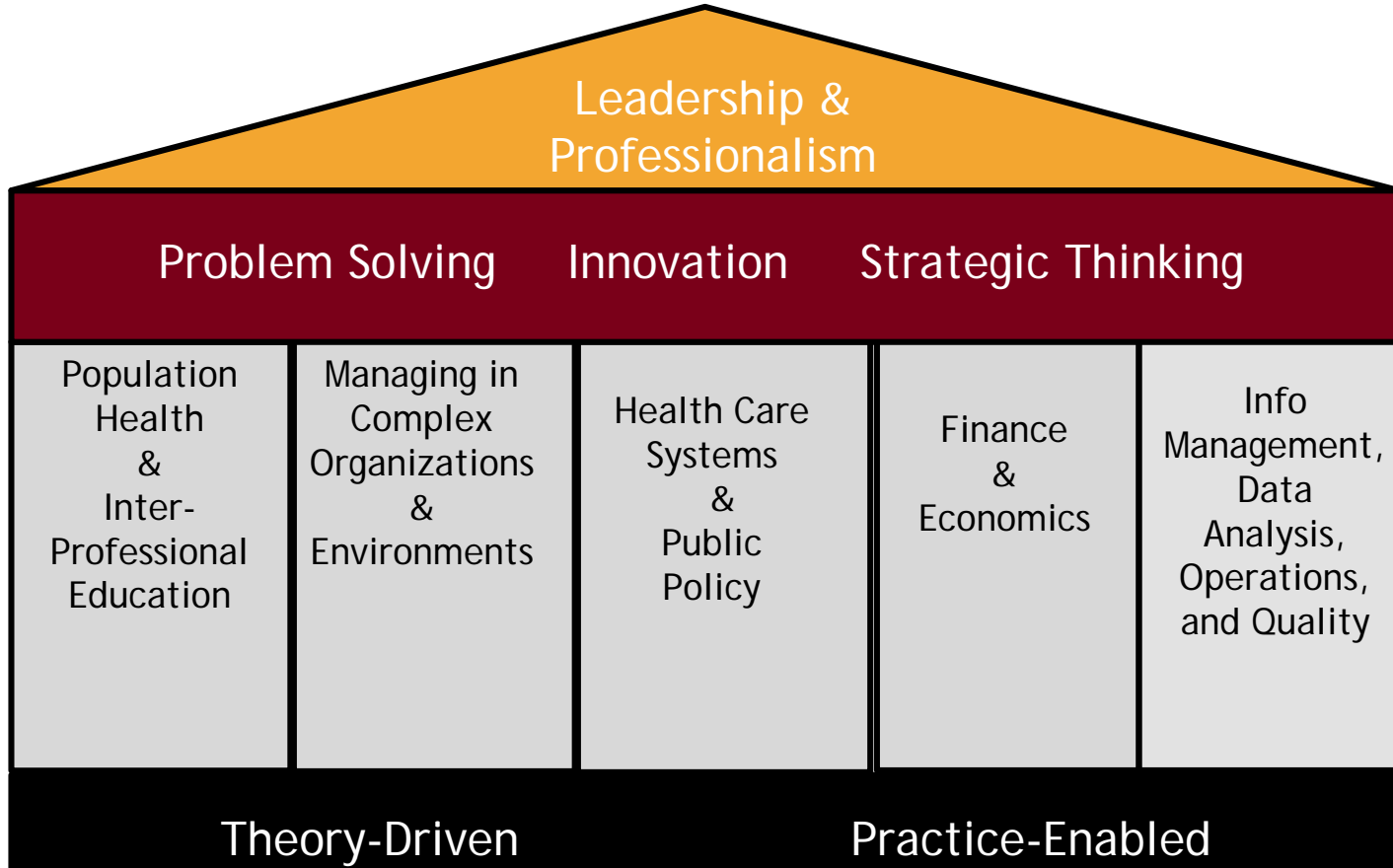
Blended, asynchronous online and on-campus coursework.

- Students spend 26 days on campus over 25 months.

# 2017 MHA Executive Cohort

## EMPLOYMENT BY INDUSTRY





## Minnesota Model of Learning



# Curriculum Innovation

- Professional Development
- Population Health
- Healthcare Finance and Value-based Payment
- Quality
- Innovation, Strategy and Finance Integration

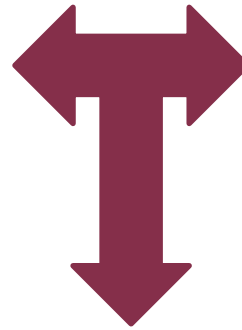
# MHA Faculty & Lecturers





SCHOOL OF  
**PUBLIC HEALTH**  
UNIVERSITY OF MINNESOTA  
**MHA PROGRAM**

**MHA ALUMNI  
ASSOCIATION/  
FOUNDATION**



*Theory Driven - Practice Enabled*

# Industry Relationships & Affiliations



# Alumni Association & Foundation

*Promote excellence  
in healthcare  
leadership by  
assuring the MHA  
Program's successes  
and cultivating a  
satisfying life-long  
alumni network.*



Lifelong Learning

Engagement

Philanthropy

# The Alumni Association & Foundation Board

Peg Van Bree '86 – Chair

Patrick Hays '71– Vice Chair

Geri Carroll '16– Secretary

Jeni Hallatt '00– Treasurer

Giles Caver '91

Greg Hart '76

Tony Kouba '08

Chris Meyers Janda '91

Ken Jones '03

Donald Moore, Jr '92

Scott Mortensen '09

Kris Mullen '99

Alison Page '96

Merrin Permut '10

Colleen Reitan '86

Robert Sabina '10

Molly Steffen '05

# MHA Alumni Engagement and Education

- Interview Candidates (~25)
- Mentorship Program (~80)
- Student/Alumni Networking Dinners (~20)
- Problem-Solving (~35)
- Summer clerkship advisors (~40)
- Hosting student and alumni events around the country (~20)
- Fellowship preceptors (~ 50% of placements with alumni affiliation)
- Leadership Symposium (~20)
- Webinars (~10)

# Alumni Support Enhances the Student Experience

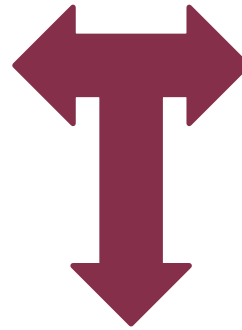
- Scholarship and graduate assistantship support
- Professional development opportunities
- Case competitions
- Improving the learning environment







SCHOOL OF  
**PUBLIC HEALTH**  
UNIVERSITY OF MINNESOTA  
**MHA PROGRAM**



**MHA ALUMNI  
ASSOCIATION/  
FOUNDATION**

*Theory Driven - Practice Enabled*